

## Arfaptin 1 Polyclonal Antibody

<b>Catalog No :</b>	YT0310
<b>Reactivity :</b>	Human;Mouse;Rat
<b>Applications :</b>	WB;IHC;IF;ELISA
<b>Target :</b>	Arfaptin 1
<b>Gene Name :</b>	ARFIP1
<b>Protein Name :</b>	Arfaptin-1
<b>Human Gene Id :</b>	27236
<b>Human Swiss Prot No :</b>	P53367
<b>Rat Gene Id :</b>	60382
<b>Rat Swiss Prot No :</b>	Q9JHU5
<b>Immunogen :</b>	The antiserum was produced against synthesized peptide derived from human ARFIP1. AA range:271-320
<b>Specificity :</b>	Arfaptin 1 Polyclonal Antibody detects endogenous levels of Arfaptin 1 protein.
<b>Formulation :</b>	Liquid in PBS containing 50% glycerol, 0.5% BSA and 0.02% sodium azide.
<b>Source :</b>	Polyclonal, Rabbit,IgG
<b>Dilution :</b>	WB 1:500 - 1:2000. IHC 1:100 - 1:300. IF 1:200 - 1:1000. ELISA: 1:40000. Not yet tested in other applications.
<b>Purification :</b>	The antibody was affinity-purified from rabbit antiserum by affinity-chromatography using epitope-specific immunogen.
<b>Concentration :</b>	1 mg/ml
<b>Storage Stability :</b>	-15°C to -25°C/1 year(Do not lower than -25°C)

**Observed Band :** 40kD

**Background :** function:Putative target protein of ADP-ribosylation factor.,similarity:Contains 1 AH domain.,subunit:Interacts with non-myristoylated GTP-bound ARF3, but not to GDP-bound ARF3, and also to ARF1. Binds with lower affinity to ARF5 and with very little affinity to ARF6.,tissue specificity:Ubiquitously expressed. Higher levels in liver, pancreas, placenta, skeletal muscle and heart.,

**Function :** function:Putative target protein of ADP-ribosylation factor.,similarity:Contains 1 AH domain.,subunit:Interacts with non-myristoylated GTP-bound ARF3, but not to GDP-bound ARF3, and also to ARF1. Binds with lower affinity to ARF5 and with very little affinity to ARF6.,tissue specificity:Ubiquitously expressed. Higher levels in liver, pancreas, placenta, skeletal muscle and heart.,

**Subcellular Location :** Golgi apparatus . Golgi apparatus, trans-Golgi network membrane .

**Expression :** Ubiquitously expressed (PubMed:9038142). Higher levels in liver, pancreas, placenta, skeletal muscle and heart (PubMed:9038142).

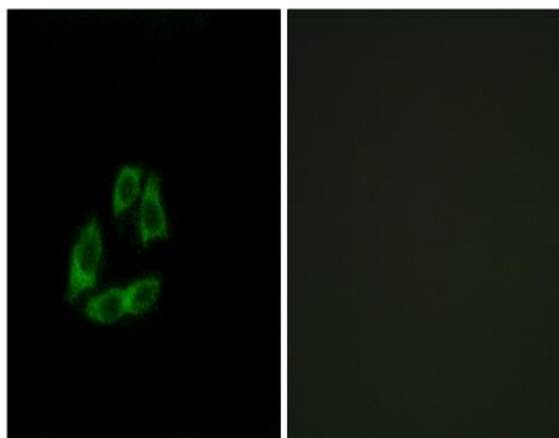
**Sort :** 2217

**No4 :** 1

**Host :** Rabbit

**Modifications :** Unmodified

## Products Images



Immunofluorescence analysis of A549 cells, using ARFIP1 Antibody. The picture on the right is blocked with the synthesized peptide.

