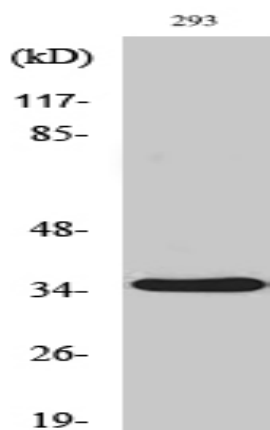


AQP4 Polyclonal Antibody

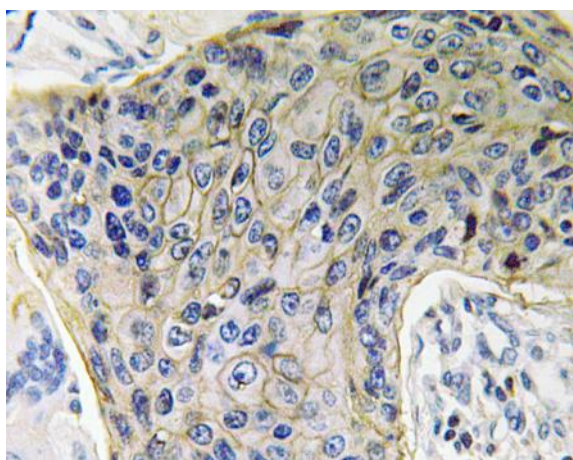
Catalog No :	YT0292
Reactivity :	Human;Mouse;Rat
Applications :	WB;IHC;IF;ELISA
Target :	AQP4
Fields :	>>Vasopressin-regulated water reabsorption;>>Bile secretion
Gene Name :	AQP4
Protein Name :	Aquaporin-4
Human Gene Id :	361
Human Swiss Prot No :	P55087
Mouse Gene Id :	11829
Mouse Swiss Prot No :	P55088
Rat Gene Id :	25293
Rat Swiss Prot No :	P47863
Immunogen :	The antiserum was produced against synthesized peptide derived from human AQP4. AA range:204-253
Specificity :	AQP4 Polyclonal Antibody detects endogenous levels of AQP4 protein.
Formulation :	Liquid in PBS containing 50% glycerol, 0.5% BSA and 0.02% sodium azide.
Source :	Polyclonal, Rabbit,IgG
Dilution :	WB 1:500 - 1:2000. IHC 1:100 - 1:300. ELISA: 1:5000.. IF 1:50-200

Purification :	The antibody was affinity-purified from rabbit antiserum by affinity-chromatography using epitope-specific immunogen.
Concentration :	1 mg/ml
Storage Stability :	-15°C to -25°C/1 year(Do not lower than -25°C)
Observed Band :	35kD
Background :	This gene encodes a member of the aquaporin family of intrinsic membrane proteins that function as water-selective channels in the plasma membranes of many cells. This protein is the predominant aquaporin found in brain and has an important role in brain water homeostasis. Alternatively spliced transcript variants encoding different isoforms have been described for this gene. A recent study provided evidence for translational readthrough in this gene and expression of an additional C-terminally extended isoform via the use of an alternative in-frame translation termination codon. [provided by RefSeq, Dec 2015],
Function :	domain:Aquaporins contain two tandem repeats each containing three membrane-spanning domains and a pore-forming loop with the signature motif Asn-Pro-Ala (NPA).,function:Forms a water-specific channel. Osmoreceptor which regulates body water balance and mediates water flow within the central nervous system.,similarity:Belongs to the MIP/aquaporin (TC 1.A.8) family.,tissue specificity:Brain - muscle >> heart, kidney, lung, and trachea.,
Subcellular Location :	Cell membrane ; Multi-pass membrane protein . Basolateral cell membrane ; Multi-pass membrane protein . Endosome membrane . Cell membrane, sarcolemma ; Multi-pass membrane protein . Cell projection . Activation of the vasopressin receptor AVPR1A triggers AQP4 phosphorylation at Ser-180 and promotes its internalization from the cell membrane. Detected on brain astrocyte processes and astrocyte endfeet close to capillaries. .
Expression :	Detected in skeletal muscle (PubMed:29055082). Detected in stomach, along the glandular base region of the fundic gland (at protein level) (PubMed:8601457). Detected in brain, lung and skeletal muscle, and at much lower levels in heart and ovary (PubMed:7559426, PubMed:8601457).
Sort :	2184
No4 :	1
Host :	Rabbit
Modifications :	Unmodified

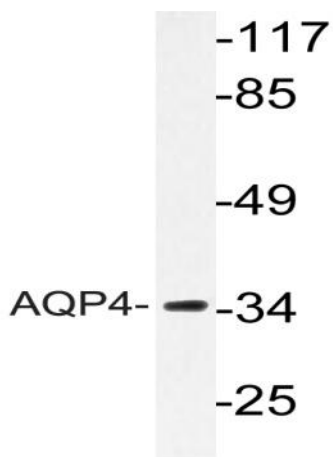
Products Images



Western Blot analysis of various cells using AQP4 Polyclonal Antibody



Immunohistochemistry analysis of AQP4 antibody in paraffin-embedded human lung carcinoma tissue.



Western blot analysis of lysate from 293 cells, using AQP4 antibody.