

AQP12 Polyclonal Antibody

Catalog No :	YT0289
Reactivity :	Human
Applications :	WB;ELISA
Target :	AQP12
Gene Name :	AQP12A/AQP12B
Protein Name :	Aquaporin-12A/B
Human Gene Id :	375318/653437
Human Swiss Prot No :	Q8IXF9/A6NM10
Immunogen :	The antiserum was produced against synthesized peptide derived from human AQP12. AA range:231-280
Specificity :	AQP12 Polyclonal Antibody detects endogenous levels of AQP12 protein.
Formulation :	Liquid in PBS containing 50% glycerol, 0.5% BSA and 0.02% sodium azide.
Source :	Polyclonal, Rabbit,IgG
Dilution :	WB 1:500 - 1:2000. ELISA: 1:40000. Not yet tested in other applications.
Purification :	The antibody was affinity-purified from rabbit antiserum by affinity-chromatography using epitope-specific immunogen.
Concentration :	1 mg/ml
Storage Stability :	-15°C to -25°C/1 year(Do not lower than -25°C)
Observed Band :	34kD
Background :	domain:Aquaporins contain two tandem repeats each containing three membrane-spanning domains and a pore-forming loop with the signature motif

Asn-Pro-Ala (NPA) .,function:Aquaporins facilitate the transport of water and small neutral solutes across cell membranes.,similarity:Belongs to the MIP/aquaporin (TC 1.A.8) family. AQP11/AQP12 subfamily.,tissue specificity:Restricted to the pancreas.,

Function :

domain:Aquaporins contain two tandem repeats each containing three membrane-spanning domains and a pore-forming loop with the signature motif Asn-Pro-Ala (NPA) .,function:Aquaporins facilitate the transport of water and small neutral solutes across cell membranes.,similarity:Belongs to the MIP/aquaporin (TC 1.A.8) family. AQP11/AQP12 subfamily.,tissue specificity:Restricted to the pancreas.,

Subcellular Location :

Membrane ; Multi-pass membrane protein .

Expression :

Restricted to the pancreas.

Sort :

2181

No4 :

1

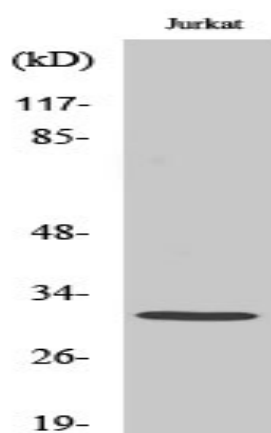
Host :

Rabbit

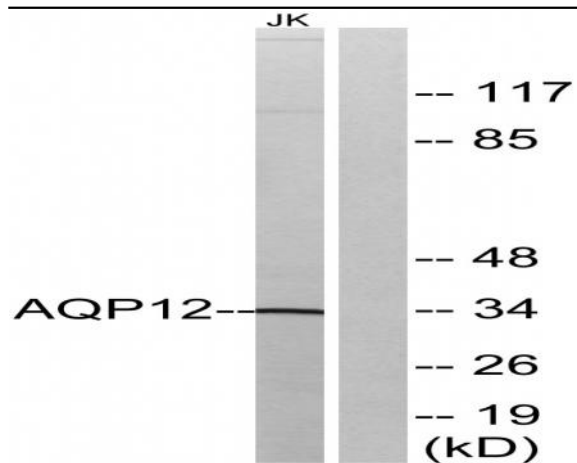
Modifications :

Unmodified

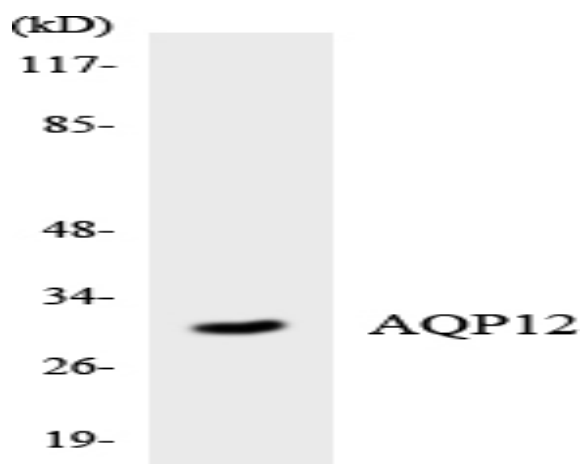
Products Images



Western Blot analysis of various cells using AQP12 Polyclonal Antibody diluted at 1:1000



Western blot analysis of lysates from Jurkat cells, using AQP12 Antibody. The lane on the right is blocked with the synthesized peptide.



Western blot analysis of the lysates from HUVEC cells using AQP12 antibody.