

ApoOL Polyclonal Antibody

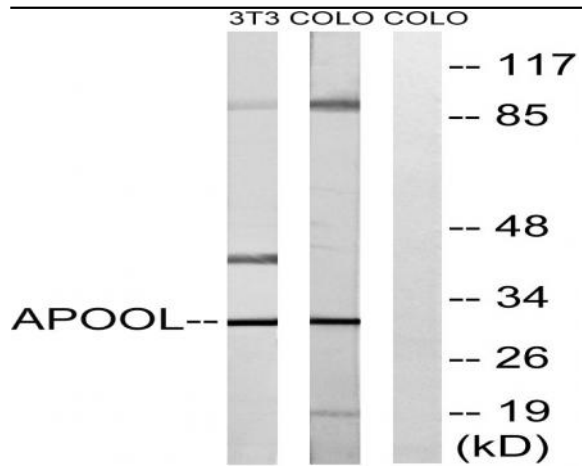
Catalog No :	YT0282
Reactivity :	Human;Mouse;Rat
Applications :	WB;ELISA
Target :	ApoOL
Gene Name :	APOOL
Protein Name :	Apolipoprotein O-like
Human Gene Id :	139322
Human Swiss Prot No :	Q6UXV4
Mouse Gene Id :	68117
Mouse Swiss Prot No :	Q78IK4
Immunogen :	The antiserum was produced against synthesized peptide derived from human APOOL. AA range:219-268
Specificity :	ApoOL Polyclonal Antibody detects endogenous levels of ApoOL protein.
Formulation :	Liquid in PBS containing 50% glycerol, 0.5% BSA and 0.02% sodium azide.
Source :	Polyclonal, Rabbit,IgG
Dilution :	WB 1:500 - 1:2000. ELISA: 1:40000. Not yet tested in other applications.
Purification :	The antibody was affinity-purified from rabbit antiserum by affinity-chromatography using epitope-specific immunogen.
Concentration :	1 mg/ml
Storage Stability :	-15°C to -25°C/1 year(Do not lower than -25°C)

Observed Band :	30kD
Background :	This gene encodes a protein which contains an apolipoprotein O superfamily domain. This domain is found on proteins in circulating lipoprotein complexes. [provided by RefSeq, Sep 2011],
Function :	similarity:Belongs to the apolipoprotein O family.,
Subcellular Location :	Mitochondrion inner membrane ; Multi-pass membrane protein . Mitochondrion .
Expression :	Liver,
Sort :	2170
No4 :	1
Host :	Rabbit
Modifications :	Unmodified

Products Images



Western blot analysis of SH-SY5Y 293T 3T3 lysis using ApoOL antibody. Antibody was diluted at 1:1000



Western blot analysis of lysates from COLO and NIH/3T3 cells, using APOOL Antibody. The lane on the right is blocked with the synthesized peptide.