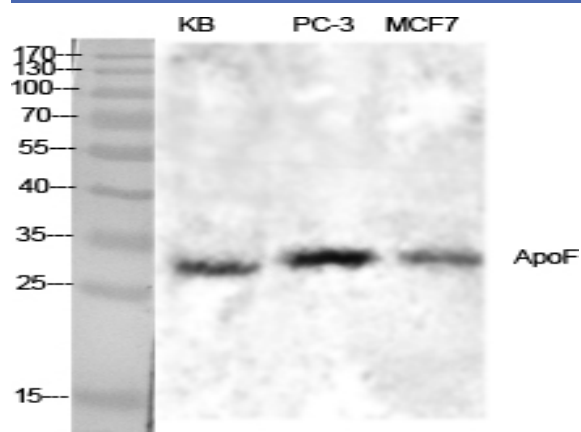


## ApoF Polyclonal Antibody

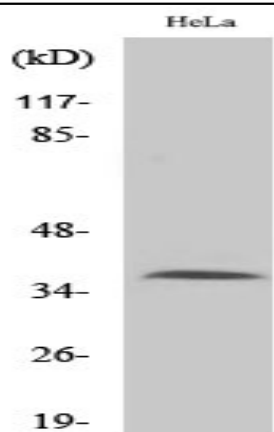
<b>Catalog No :</b>	YT0276
<b>Reactivity :</b>	Human;Rat;Mouse;
<b>Applications :</b>	WB;ELISA
<b>Target :</b>	ApoF
<b>Gene Name :</b>	APOF
<b>Protein Name :</b>	Apolipoprotein F
<b>Human Gene Id :</b>	319
<b>Human Swiss Prot No :</b>	Q13790
<b>Mouse Swiss Prot No :</b>	Q91V80
<b>Immunogen :</b>	The antiserum was produced against synthesized peptide derived from human APOF. AA range:221-270
<b>Specificity :</b>	ApoF Polyclonal Antibody detects endogenous levels of ApoF protein.
<b>Formulation :</b>	Liquid in PBS containing 50% glycerol, 0.5% BSA and 0.02% sodium azide.
<b>Source :</b>	Polyclonal, Rabbit,IgG
<b>Dilution :</b>	WB 1:500 - 1:2000. ELISA: 1:40000. Not yet tested in other applications.
<b>Purification :</b>	The antibody was affinity-purified from rabbit antiserum by affinity-chromatography using epitope-specific immunogen.
<b>Concentration :</b>	1 mg/ml
<b>Storage Stability :</b>	-15°C to -25°C/1 year(Do not lower than -25°C)
<b>Observed Band :</b>	38kD

<b>Background :</b>	The product of this gene is one of the minor apolipoproteins found in plasma. This protein forms complexes with lipoproteins and may be involved in transport and/or esterification of cholesterol. [provided by RefSeq, Jul 2008],
<b>Function :</b>	function:Minor apolipoprotein that associates with LDL. Inhibits cholesteryl ester transfer protein (CETP) activity and appears to be an important regulator of cholesterol transport. Also associates to a lesser degree with VLDL, Apo-AI and Apo-AII.,tissue specificity:Liver. Secreted in plasma.,
<b>Subcellular Location :</b>	Secreted .
<b>Expression :</b>	Expressed by the liver and secreted in plasma.
<b>Sort :</b>	2159
<b>No4 :</b>	1
<b>Host :</b>	Rabbit
<b>Modifications :</b>	Unmodified

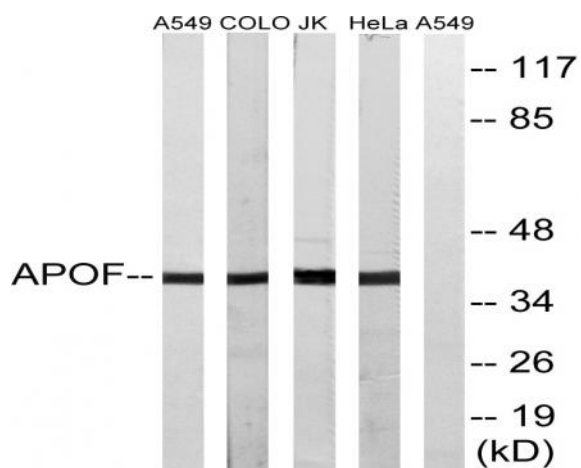
## Products Images



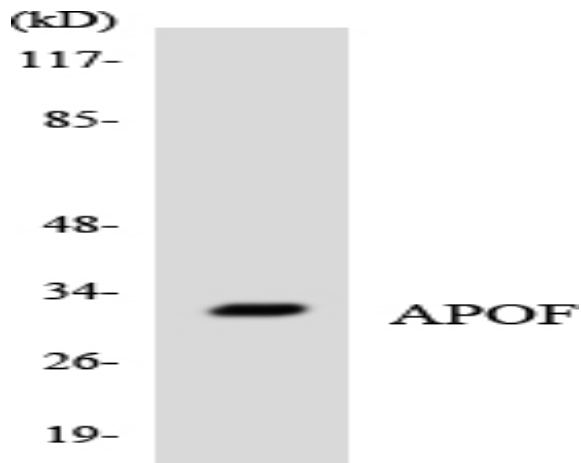
Western Blot analysis of various cells using ApoF Polyclonal Antibody diluted at 1:1000



Western Blot analysis of A549 cells using ApoF Polyclonal Antibody diluted at 1:1000



Western blot analysis of lysates from HeLa, Jurkat, COLO, and A549 cells, using APOF Antibody. The lane on the right is blocked with the synthesized peptide.



Western blot analysis of the lysates from COLO205 cells using APOF antibody.