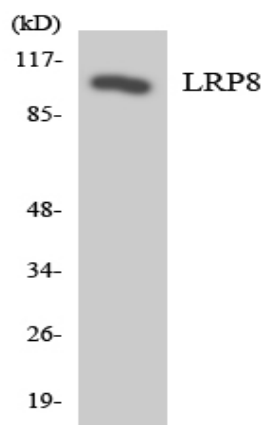


ApoER2 Polyclonal Antibody

Catalog No :	YT0275
Reactivity :	Human;Rat;Mouse;
Applications :	WB;ELISA
Target :	ApoER2
Gene Name :	LRP8
Protein Name :	Low-density lipoprotein receptor-related protein 8
Human Gene Id :	55911
Human Swiss Prot No :	Q14114
Mouse Swiss Prot No :	Q924X6
Immunogen :	The antiserum was produced against synthesized peptide derived from human LRP8. AA range:451-500
Specificity :	ApoER2 Polyclonal Antibody detects endogenous levels of ApoER2 protein.
Formulation :	Liquid in PBS containing 50% glycerol, 0.5% BSA and 0.02% sodium azide.
Source :	Polyclonal, Rabbit,IgG
Dilution :	WB 1:500 - 1:2000. ELISA: 1:40000. Not yet tested in other applications.
Purification :	The antibody was affinity-purified from rabbit antiserum by affinity-chromatography using epitope-specific immunogen.
Concentration :	1 mg/ml
Storage Stability :	-15°C to -25°C/1 year(Do not lower than -25°C)
Observed Band :	100kD

Background :	This gene encodes a member of the low density lipoprotein receptor (LDLR) family. Low density lipoprotein receptors are cell surface proteins that play roles in both signal transduction and receptor-mediated endocytosis of specific ligands for lysosomal degradation. The encoded protein plays a critical role in the migration of neurons during development by mediating Reelin signaling, and also functions as a receptor for the cholesterol transport protein apolipoprotein E. Expression of this gene may be a marker for major depressive disorder. Alternatively spliced transcript variants encoding multiple isoforms have been observed for this gene. [provided by RefSeq, Jun 2011],
Function :	alternative products:Additional isoforms seem to exist. No differences were observed in the pattern splicing between control and Alzheimer brains,disease:Genetic variation in LRP8 is associated with susceptibility to myocardial infarction type 1 [MIM:608446]. Atherosclerotic coronary artery disease (CAD) and myocardial infarction (MI) are complex traits that account for the leading cause of death in the Western world heart disease.,domain:The cytoplasmic domain is involved in the binding of DAB1 and in the recruitment of JNK-interacting proteins. Isoforms, which lack part of the cytoplasmic domain, are unable to recruit members of the family of JNK interacting proteins (JIP) to the cytoplasmic tail.,function:Cell surface receptor for Reelin (RELN) and apolipoprotein E (apoE)-containing ligands. LRP8 participates in transmitting the extracellular Reelin signal to intracellular signaling p
Subcellular Location :	Cell membrane ; Single-pass type I membrane protein . Secreted . Isoforms that contain the exon coding for a furin-type cleavage site are proteolytically processed, leading to a secreted receptor fragment. .
Expression :	Expressed mainly in brain and placenta. Also expressed in platelets and megakaryocytic cells. Not expressed in the liver.
Tag :	orthogonal
Sort :	2158
No4 :	1
Host :	Rabbit
Modifications :	Unmodified

Products Images



Western blot analysis of the lysates from HeLa cells using LRP8 antibody.