

APLP-2 Polyclonal Antibody

Catalog No :	YT0268
Reactivity :	Human;Mouse;Rat
Applications :	WB;IHC;IF;ELISA
Target :	APLP2
Gene Name :	APLP2
Protein Name :	Amyloid-like protein 2
Human Gene Id :	334
Human Swiss Prot No :	Q06481
Mouse Gene Id :	11804
Mouse Swiss Prot No :	Q06335
Rat Swiss Prot No :	P15943
Immunogen :	The antiserum was produced against synthesized peptide derived from human APLP2. AA range:241-290
Specificity :	APLP-2 Polyclonal Antibody detects endogenous levels of APLP-2 protein.
Formulation :	Liquid in PBS containing 50% glycerol, 0.5% BSA and 0.02% sodium azide.
Source :	Polyclonal, Rabbit,IgG
Dilution :	WB 1:500 - 1:2000. IHC 1:100 - 1:300. ELISA: 1:40000.. IF 1:50-200
Purification :	The antibody was affinity-purified from rabbit antiserum by affinity-chromatography using epitope-specific immunogen.
Concentration :	1 mg/ml

Storage Stability : -15°C to -25°C/1 year(Do not lower than -25°C)

Observed Band : 90-120kD

Background : This gene encodes amyloid precursor- like protein 2 (APLP2), which is a member of the APP (amyloid precursor protein) family including APP, APLP1 and APLP2. This protein is ubiquitously expressed. It contains heparin-, copper- and zinc- binding domains at the N-terminus, BPTI/Kunitz inhibitor and E2 domains in the middle region, and transmembrane and intracellular domains at the C-terminus. This protein interacts with major histocompatibility complex (MHC) class I molecules. The synergy of this protein and the APP is required to mediate neuromuscular transmission, spatial learning and synaptic plasticity. This protein has been implicated in the pathogenesis of Alzheimer's disease. Multiple alternatively spliced transcript variants encoding different isoforms have been identified. [provided by RefSeq, Aug 2011],

Function : alternative products:Additional isoforms seem to exist,function:May play a role in the regulation of hemostasis. The soluble form may have inhibitory properties towards coagulation factors. May interact with cellular G-protein signaling pathways. May bind to the DNA 5'-GTCACATG-3'(CDEI box). Inhibits trypsin, chymotrypsin, plasmin, factor XIA and plasma and glandular kallikrein.,PTM:The BPTI/Kunitz inhibitor domain is O-glycosylated.,similarity:Belongs to the APP family.,similarity:Contains 1 BPTI/Kunitz inhibitor domain.,subunit:Interacts with CPEB1.,tissue specificity:In placenta, brain, heart, lung, liver, kidney and endothelial tissues.,

Subcellular Location : Cell membrane ; Single-pass type I membrane protein . Nucleus .

Expression : Expressed in placenta, brain, heart, lung, liver, kidney and endothelial tissues.

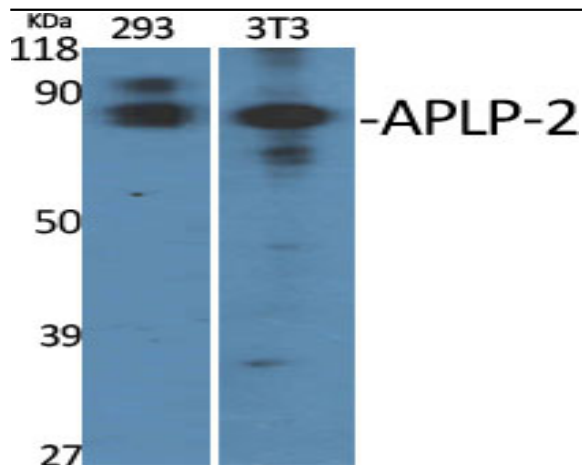
Sort : 2137

No4 : 1

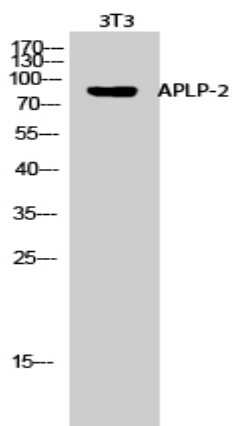
Host : Rabbit

Modifications : Unmodified

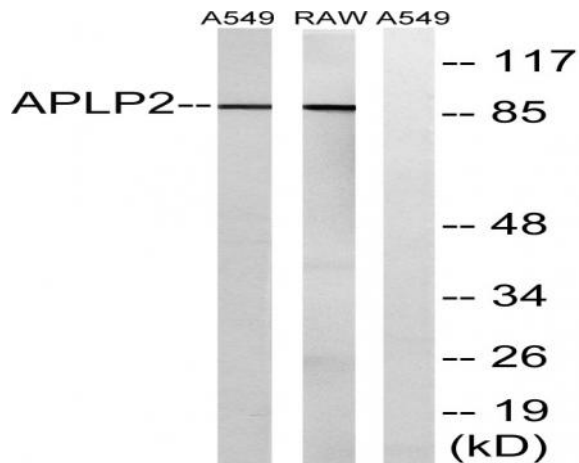
Products Images



Western Blot analysis of various cells using APLP-2 Polyclonal Antibody diluted at 1:2000 cells nucleus extracted by Minute TM Cytoplasmic and Nuclear Fractionation kit (SC-003, Inventbiotech, MN, USA).



Western Blot analysis of 3T3 cells using APLP-2 Polyclonal Antibody diluted at 1:2000 cells nucleus extracted by Minute TM Cytoplasmic and Nuclear Fractionation kit (SC-003, Inventbiotech, MN, USA).



Western blot analysis of lysates from RAW264.7 and A549 cells, using APLP2 Antibody. The lane on the right is blocked with the synthesized peptide.