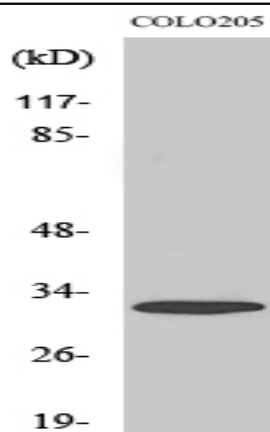


APHC Polyclonal Antibody

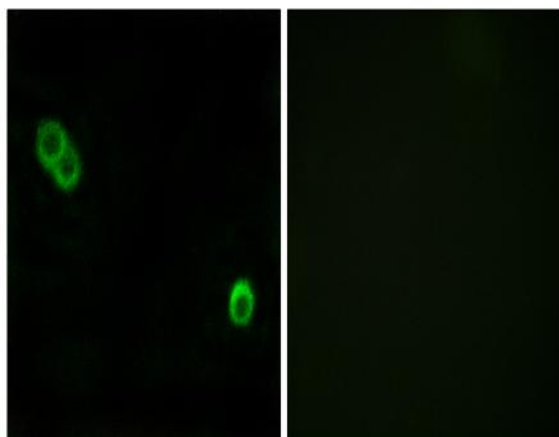
Catalog No :	YT0263
Reactivity :	Human;Mouse
Applications :	WB;IHC;IF;ELISA
Target :	APHC
Fields :	>>Sphingolipid metabolism;>>Metabolic pathways
Gene Name :	ACER3
Protein Name :	Alkaline ceramidase 3
Human Gene Id :	55331
Human Swiss Prot No :	Q9NUN7
Mouse Gene Id :	66190
Mouse Swiss Prot No :	Q9D099
Immunogen :	The antiserum was produced against synthesized peptide derived from human PHCA. AA range:171-220
Specificity :	APHC Polyclonal Antibody detects endogenous levels of APHC protein.
Formulation :	Liquid in PBS containing 50% glycerol, 0.5% BSA and 0.02% sodium azide.
Source :	Polyclonal, Rabbit,IgG
Dilution :	WB 1:500 - 1:2000. IHC 1:100 - 1:300. IF 1:200 - 1:1000. ELISA: 1:40000. Not yet tested in other applications.
Purification :	The antibody was affinity-purified from rabbit antiserum by affinity-chromatography using epitope-specific immunogen.
Concentration :	1 mg/ml

Storage Stability :	-15°C to -25°C/1 year(Do not lower than -25°C)
Observed Band :	35kD
Cell Pathway :	Sphingolipid metabolism;
Background :	enzyme regulation:Activated by Ca(2+) and inhibited by Zn(2+).,function:Hydrolyzes only phytoceramide into phytosphingosine and free fatty acid. Does not have reverse activity.,similarity:Belongs to the alkaline ceramidase family.,tissue specificity:Ubiquitously expressed. Highest expression in placenta.,
Function :	enzyme regulation:Activated by Ca(2+) and inhibited by Zn(2+).,function:Hydrolyzes only phytoceramide into phytosphingosine and free fatty acid. Does not have reverse activity.,similarity:Belongs to the alkaline ceramidase family.,tissue specificity:Ubiquitously expressed. Highest expression in placenta.,
Subcellular Location :	Endoplasmic reticulum membrane ; Multi-pass membrane protein . Golgi apparatus membrane ; Multi-pass membrane protein .
Expression :	Ubiquitously expressed. Highly expressed in placenta (PubMed:11356846). Expressed in erythrocytes (PubMed:20207939).
Sort :	2128
No4 :	1
Host :	Rabbit
Modifications :	Unmodified

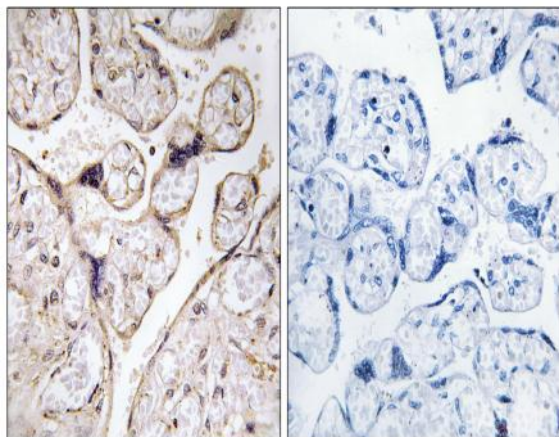
Products Images



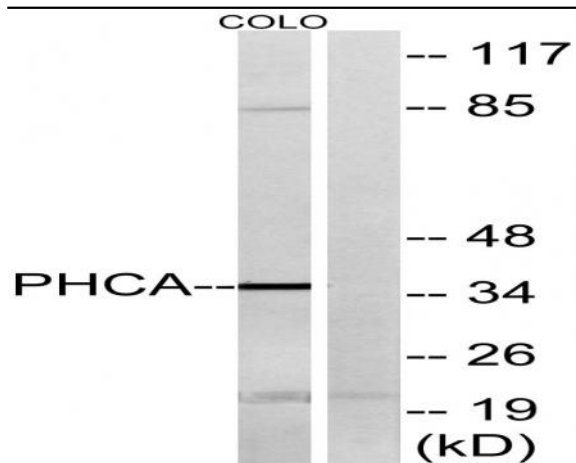
Western Blot analysis of various cells using APHC Polyclonal Antibody



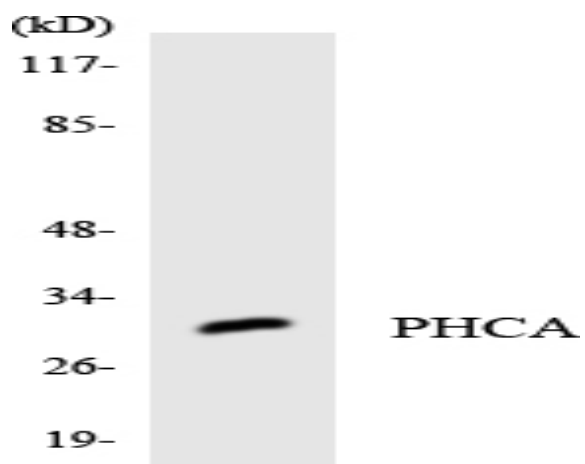
Immunofluorescence analysis of MCF7 cells, using PHCA Antibody. The picture on the right is blocked with the synthesized peptide.



Immunohistochemistry analysis of paraffin-embedded human placenta tissue, using PHCA Antibody. The picture on the right is blocked with the synthesized peptide.



Western blot analysis of lysates from COLO cells, using PHCA Antibody. The lane on the right is blocked with the synthesized peptide.



Western blot analysis of the lysates from HT-29 cells using PHCA antibody.